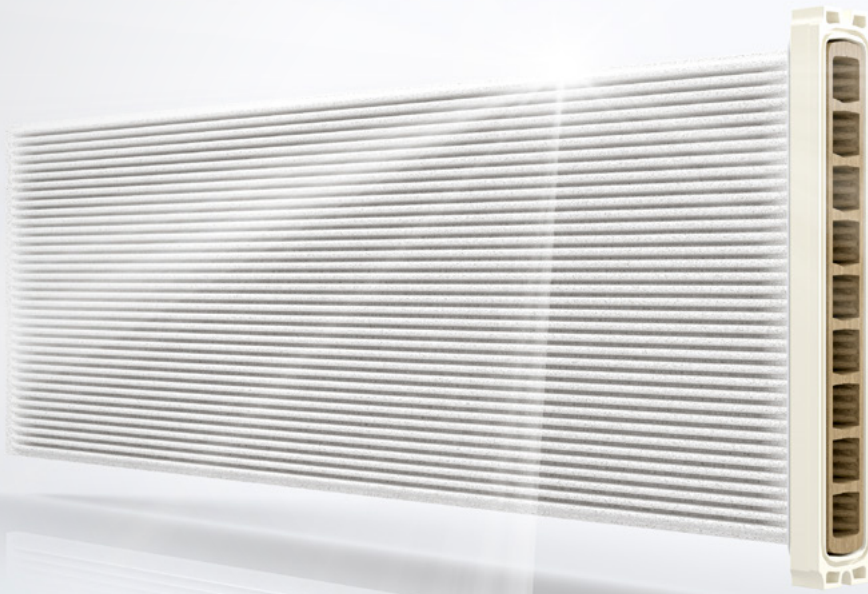


pure productivity
durable. effective. filter.

PURE SURFACE FILTRATION



THE ORIGINAL
BY HERDING


made in germany

BENEFITS

HERDING FILTER TECHNOLOGY

The Herding® filter technology bases on pure surface filtration. It sustainably protects man and machine from harmful production emissions and enables absolutely pure and contamination-free material recovery. This increases directly your productivity.

Lowest clean gas values, absolutely constant operating conditions, highest availability and energy efficiency are key features of the innovative technology. Herding® filter elements show extreme durability and, depending on the process, long service life times of more than 15 years. Thereby the filters make a valueable contribution to environmental protection and sustainability.

Herding® filter elements have proven themselves for decades in effective and safe particle separation in almost all areas of industry . Even with finest grain sizes, energy-efficient air recirculation is possible in most cases, proven even with toxic dust. Numerous applications can be covered in a temperature range of up to 450 °C.

**DURABLE
LONG SERVICE LIFE**



**CONSTANT
OPERATING CONDITIONS**



**ENERGY EFFICIENCY DUE TO
LOW CLEANING PRESSURE**



**PURE AIR AND CLEAN GAS
DUE TO LOWEST CLEAN GAS VALUES**



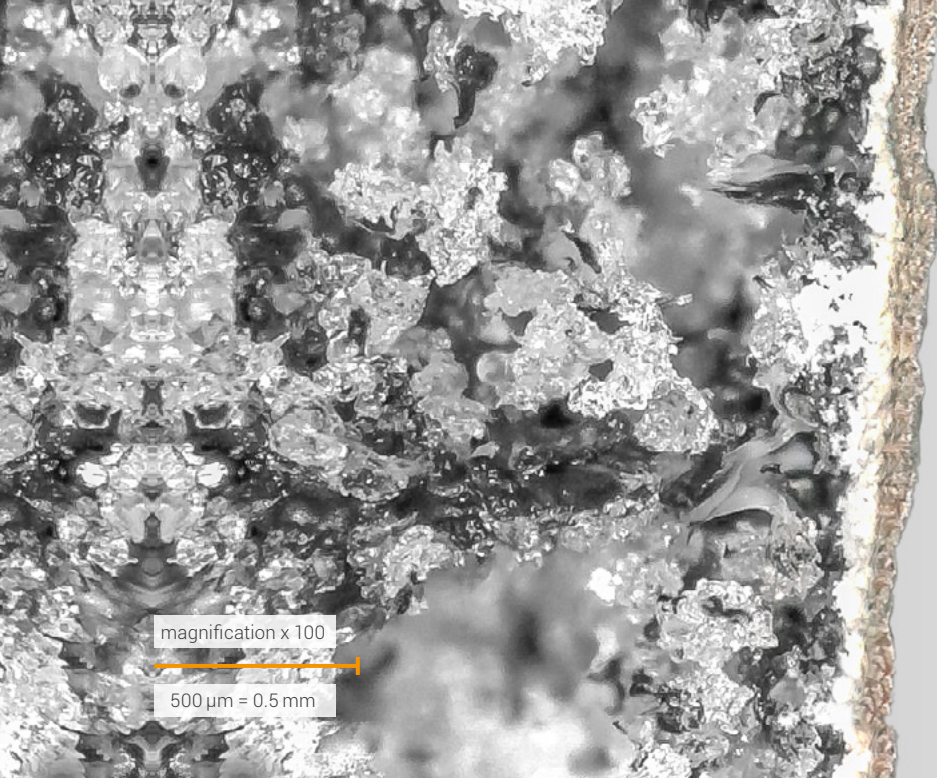
**COMPACT
DESIGN**



**PRODUCT RECOVERY
WITHOUT CONTAMINATION**



**RESISTANT
TO CHEMICALS**



magnification x 100

500 μm = 0.5 mm

HERDING FILTER TECHNOLOGY WITH PURE SURFACE FILTRATION

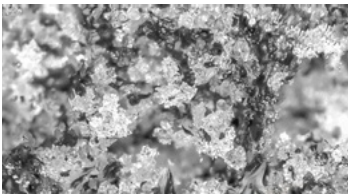
DESIGN

FILTER MATRIX

Compact rigid body

Herding DELTA, PRO, HSL

Sintered PE (polyethylene)



Herding BETA

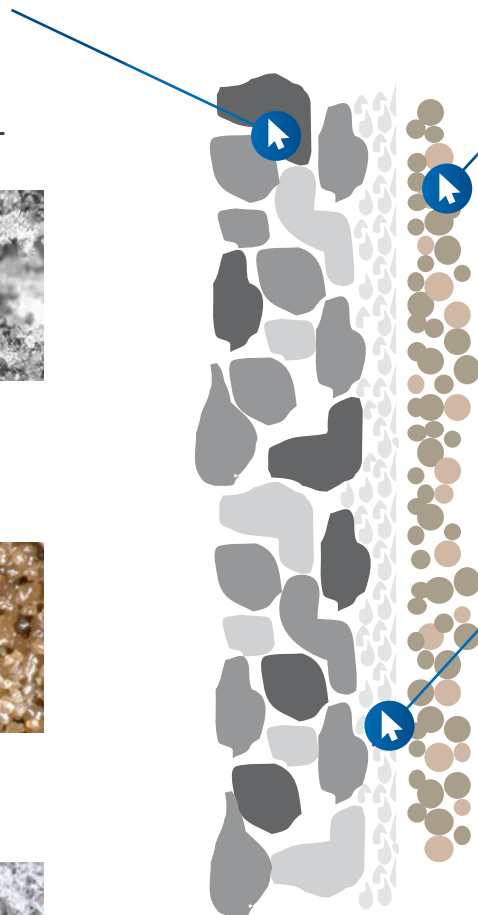
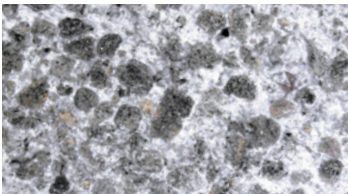
Sintered PPS

(polyphenylene sulfide)



Herding ALPHA

Clay with ceramic binder



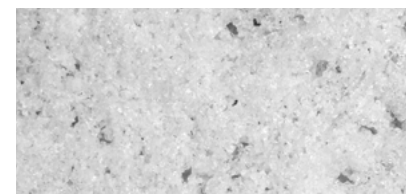
EFFECTIVE PRODUCT SEPARATION

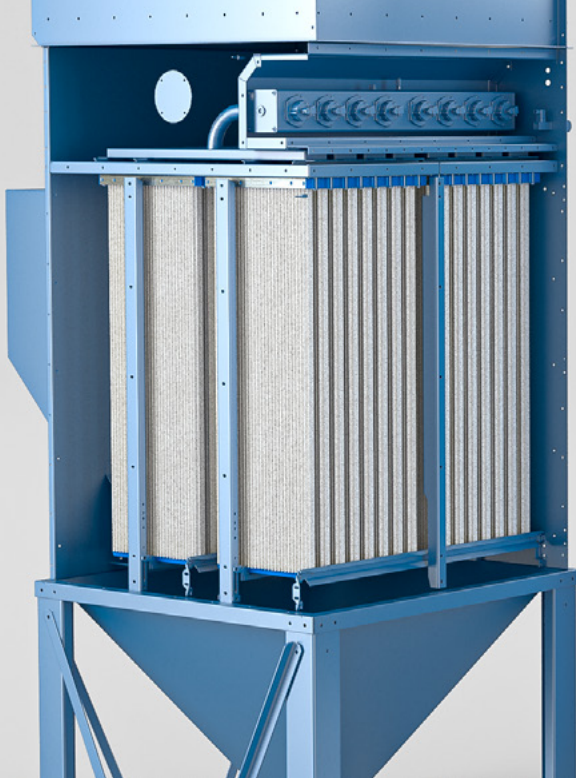
The particle spectrum to be filtered is separated on the surface.

No affinity to store fine particles in the filter body.

SURFACE COATING

Microporous layer, homogeneously embedded in the filter surface





INSTALLATION

DIRECTION OF INSTALLATION

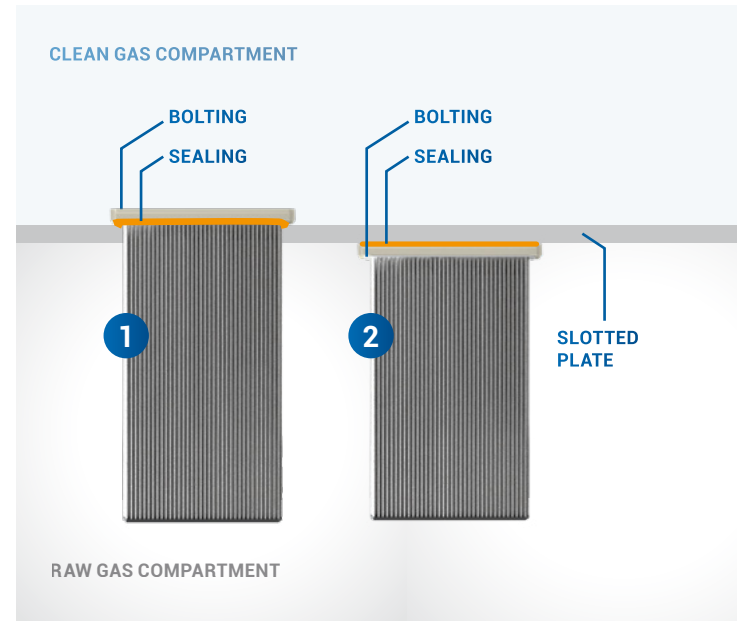
Depending on the individual application and process requirements horizontal or vertical installation is possible.

1 CLEAN GAS-SIDE INSTALLATION

Clean gas-side installation enables optimal and clean access to the filter elements and provides highest possible protection for the personnel.

2 RAW GAS-SIDE INSTALLATION

The installation of the filter elements from the raw gas side usually allows a direct and optimal revision of the raw gas area. No additional height is required for the installation.



| | Herding DELTA DELTA² | Herding PRO³ | HSL | HSL-C | Herding BETA | Herding ALPHA |
|-----------------------|---|-----------------------------------|------------|--------------|------------------------|-------------------------|
| Horizontal | ✓ | ✓ | ✗ | ✗ | ✗ | ✗ |
| Vertical | ✓ | ✓ | ✓ | ✓ | ✓ | ✓ |
| Clean gas side | ✓ | ✓ | ✓ | ✓ | ✓ | ✓ |
| Raw gas side | ✓ | ✗ | ✓ | ✓ | ✗ | ✗ |



FILTERS

| | Herding DELTA DELTA² | Herding PRO³ | HSL | HSL-C | Herding BETA | Herding ALPHA |
|--|--|------------------------|-------------|--------------|------------------------|-------------------------|
| Operating temperature up to max. [°C] | 70 | 70 | 70 | 100 | 160 | 450 |
| Residual dust content [mg/Am³] | < 0.1 | < 0.1 | < 0.1 | < 0.1 | < 0.5 | < 2.0 |
| Filter surface area per filter element [m²] | 1.10 - 7.10 | 3.15 | 0.54 - 7.64 | 0.89 - 7.64 | 2.20 - 4.75 | 3.00 |
| Adhesive dusts (with precoating) | ✓ | ✓ | ✓ | ✓ | ✓ | ✓ |
| Abrasive dusts | ✓ | ✓ | ✓ | ✓ | ✓ | ✓ |
| Regeneration | ✓ | ✓ | ✓ | ✓ | ✓ | ✗ |
| Coating with PTFE | ✓ | ✓ | ✓ | ✓ | ✓ | ✗ |
| DustExZoneBarrier acc. to VDI 2263 | ✓ | ✓ | ✓ | ✓ | ✓ | ✗ |
| Clean air recirculation (depending on the dust class) | ✓ | ✓ | ✓ | ✓ | ✓ | ✓ |
| Antistatic / dissipative version | ✓ | ✗ | ✓ | ✓ | ✗ | ✗ |
| Non-chargeable version | ✓ | ✓ | ✓ | ✓ | ✓ | ✗ |
| Pharmaceuticals/Foods EU approved | ✗ | ✗ | ✓ | ✓ | ✓ | ✗ |

HERDING FILTERTECHNIK - PURE PRODUCTIVITY

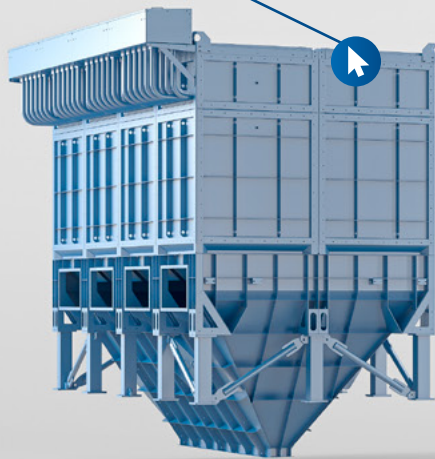
Sustainability „made in Germany“

From the single filter element to the completely installed filter system, the production chain starts with the filter media production and ends with the final assembly.

The vertical range of manufacture in Germany ensures an extremely high quality standard and the greatest possible flexibility for our customers worldwide. Based on a well planned modular principle, a variety of filter system types is available, which can be individually tailored to the required application. A wide range of housing and construction materials rounds off the range of product variations.

Herding **MAXX**

For very high air flows



Herding **RESIST**

For applications with high requirements on pressure resistance and easy cleanability



Herding **PROCESS**

The series for highest expectations



Herding **FLEX**

The flexible type series for all industries



Herding **COMP**

The compact filter system for limited space





CONTACT

Please feel free to contact us! You can fill in the form and send it to us by e-mail.

Company

First name

Family name

Phone

E-Mail

Branch

Application

Comments

Herding® is a registered trademark//V1.7

Herding GmbH Filtertechnik
August-Borsig-Str. 3
92224 Amberg / Germany

Phone: +49 9621 630-0
Mail: info@herding.de
www.herding.com

FOLLOW US ON

